



# **FUTURE.**

## **COMPANY PROFILE**

---

July 2023

# CONTACT

IAN HARRY MANN  
DIRECTOR

---

Telegram/Whatsapp  
+855 099 899 122

ian@future.archi  
www.future.archi

# CONTENTS

<b>COMPANY OVERVIEW</b>	1
INTRODUCTION	3
COMMUNICATION AND VISUALISATION	5
BIM VIRTUAL BUILDING SYSTEMS	7
AWARDS	9
LEADERSHIP	11
FUTURE TEAM	15
<b>EXPERIENCE</b>	17
MASTERPLANNING & HIGH RISE PROJECTS	19
MID RISE & LOW RISE PROJECTS	43
CULTURAL PROJECTS	69
INTERIOR DESIGN PROJECTS	75

A blurred office environment with several workers at their desks. In the foreground, a woman with dark hair is looking down at her work. To her right, another person is partially visible, also working. The background shows large windows with a view of greenery outside. The word "FUTURE." is centered in a white box.

**FUTURE.**



# COMPANY OVERVIEW

---

INTRODUCTION  
COMMUNICATION AND VISUALISATION  
BIM VIRTUAL BUILDING SYSTEMS  
AWARDS  
LEADERSHIP  
FUTURE TEAM

# INTRODUCTION

Future is a leader in the design, construction and real estate industry in Cambodia, with partners in London and Sydney. We focus on delivering quality and safety to our clients and the community, providing total end-to-end building and design solutions.

We believe strongly in a fully integrated cross-disciplinary approach to design. The built environment is delivered by a range of professionals, and dialogue between the various experts and stakeholders should never be in isolation. By engaging all parties in the early stages of design, we can minimise problems and delays in later stages of projects.

Our multi-disciplinary team of Architects, Interior Designers, and CGI artists complement our Construction team in delivering high quality services including:

## **PROJECT MANAGEMENT**

## **URBAN DESIGN & MASTERPLANNING**

## **ARCHITECTURAL DESIGN**

## **INTERIOR DESIGN**

## **VISUALISATION & VIRTUAL REALITY**

Internal workshops paired with continuous mentorship allows for knowledge sharing from our experienced team members to young architects, new recruits and those wanting to develop skills in a new field. Time allowance to practice and develop software skills in projects is critical, so that we can improve our entire team's capabilities.



## STATION RENEWAL MASTERPLAN

---

*Ian led the team at Fender Katsalidis on masterplan for a major transport hub project. The project involved a large number of consultants and stakeholders for a revitalisation of a major transport hub.*

*A new train station, residential accommodation, retail, commercial and educational precinct form what will transform the city in the coming decades.*

# COMMUNICATION AND VISUALISATION

Future utilises a range of visualisation software to communicate our designs for clients and for marketing purposes.

Real-time rendering as well as Virtual Reality allow for rapid visualisation of spaces, allowing full visual integration and project understanding from all stakeholders from preliminary design phases through to project completion.

Our application of Virtual Reality is paired with our detailed virtual 3d BIM models, ensuring that all visualisation is reflective of actual design and documentation. Real-time updates of construction documentation are reflected in our visual packages, allowing us to communicate design, materials and finishes to clients and contractors.



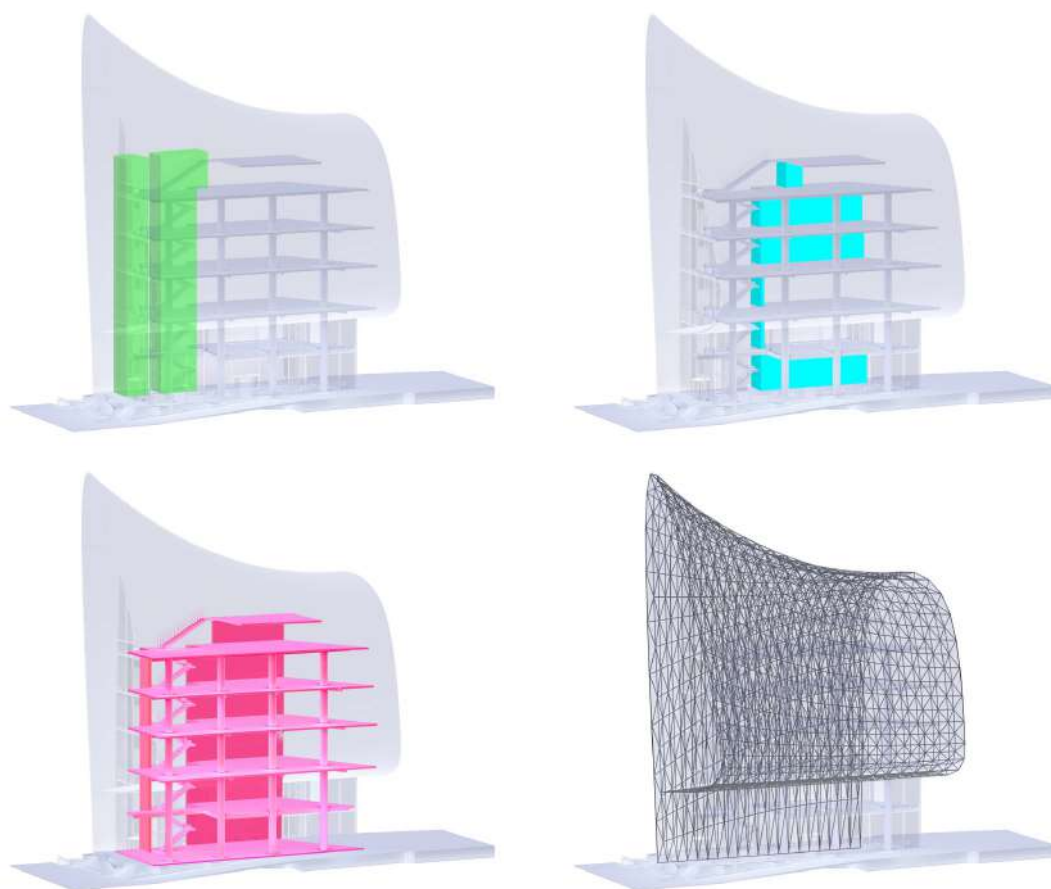
## ART OF LIVING TOGETHER VIRTUAL GALLERY

# VIRTUAL BUILDING SYSTEMS (BIM)

Our 3D virtual building approach allows for detailed and information rich documentation, with detailed information about location, materiality, costing, quantities and specifications.

Through leading BIM software, we model all aspects of our projects into a virtual building, fully integrating architecture, interior, MEP, structure, etc. This ensures that we have the most detailed overview of all our projects, for quality, accuracy and precision.

Future is currently the leading BIM design firm in Cambodia, using BIM on 100% of our projects. We work closely with our various design and engineering teams, contractors and third-party consultants to ensure that the project pipeline takes full advantage of everything BIM can offer.



## VIRTUAL BUILDING SYSTEMS

---

*Cross-discipline integration of 3D virtual building models ensures that our projects are realised in virtual format prior to reaching the site, minimising risks and ensuring quality and accuracy.*

# AWARDS

2022

## KAMBUJAYA RESIDENCES

*PROPERTYGURU CAMBODIA PROPERTY AWARDS*

Best Breakthrough Developer

Best Housing Interior Design

Best Boutique Housing Development (Phnom Penh)

Best Boutique Housing Architectural Design

Best Boutique Housing Landscaping Design



PROPERTYGURU PROPERTY AWARDS 2022

# LEADERSHIP

## IAN HARRY MANN

FOUNDER, MANAGING DIRECTOR

### Education

Bachelor of Design (Architecture) (Hons),  
Deakin University, Geelong 2012

Master of Advanced Architecture,  
Institute for Advanced Architecture of Catalonia  
(IAAC), Spain 2015

Master of Business Administration,  
Australian Institute of Business (AIB), 2018



Harry founded Future in 2019, since which he has led both Australian and Cambodian architecture, engineering, interior and CGI teams to deliver both high end and affordable housing projects.

Prior to founding Future, Harry was a Project Architect at Fender Katsalidis in Sydney, Australia, where he delivered a range of urban design and architecture projects.

Harry has been involved in numerous projects ranging from masterplanning to residential design in Australia, Germany, Japan, Thailand, the UK, Spain and Cambodia. He has led the team at Future since its formation, developing the projects, team and capacity.

Harry is passionate about entrepreneurship and innovation, bringing new ideas and concepts to his design work, applying Design Thinking to both architecture and business.

---

*"Interdisciplinary design is critical to the success of any project. We must consider every project in its direct, local and global context, incorporating all stakeholders to achieve the best possible outcome for the built environment."*



## CHANTHA HENG

DIRECTOR

### Current roles

Director of Operation Group  
PPCB (Phnom Penh Commercial Bank)

### Education

Bachelor of Business Administration  
RMIT, Melbourne

Mr. Heng, Chantha is the Director of Operation Group at Phnom Penh Commercial Bank (PPCBank), one of the most innovative and fastest growing commercial banks in Cambodia.

He has 13 years banking experience in Cambodia covering Deposit, Lending, Operations, Credit, Risk and Compliance with local, regional and international banks.

Before joining PPCBank in mid 2018, he worked with ANZRoyal for 7 years as a Branch Manager, Lending Manager, Credit Manager and Head of Retail Risk. He then moved to Canadia Bank as Head of Risk and Compliance. After 3 years he changed to Maybank (Cambodia) as a Deputy Business Operations Support/Head of Credit Admin/Loan Management and Head of Community Financial Services.

Mr. Heng was born in Cambodia and was raised in Melbourne, Australia. He obtained his BA degree at RMIT University, Australia.

## KENNETH TANG

DIRECTOR

### Current roles

Managing Director: Dynamic Technologies  
Director: Urbanetic Pte Ltd (Singapore)  
President: Australian Chamber of Commerce  
Vice Chair: EuroCham ICT Committee  
(Cambodia)

### Education

Bachelor of Science (Information Technology)  
University of New South Wales



Kenneth Tang has been the Managing Director of Dynamic Technologies since March 2019. Prior to moving to Cambodia, Kenneth has had an extensive Business Information Technology career, working in multiple industries and across various countries including Hong Kong, China, United Kingdom, France, USA and his native Australia.

He started his technology career with Coca-Cola Amatil Australia in 1995 and has worked for Computer Sciences Corporation (HK and UK), AXA Insurance (UK), Scottish Provident UK and also has consulted to many Fortune 500 companies. He began working in network and data centre operations followed by software development, management consulting, and data analytics/AI.

Kenneth was born in Battambang, Cambodia and his family moved to Australia at a very early age. He attended Sydney Boys High School and graduated from the University of New South Wales with a Bachelor of Science majoring in Information Technology.

He currently is a board director of Urbanetic Pte Ltd (Singapore), board member of the Australian Chamber of Commerce (Cambodia), and Vice Chair of the EuroCham ICT committee (Cambodia).

---

*"As a human and consumer, I believe that design, manipulation of space and quality build can create an environment where we feel comfortable, happy and yet energised, and knowing that it's built to the highest standards, this is what future embodies and why I'm here."*



## FUTURE TEAM

Future believes in developing the next generation of Cambodian architecture. Referencing local historical design, context and climate, we develop local young architects with leading architectural philosophy and Australian standards to envision what architecture, urbanisation and the built environment looks like for Cambodia in the coming decades.

Passionate about our team, we focus on maintaining a healthy and vibrant culture within the workplace, encourage equal opportunity and development.

As Sir Richard Branson says: "Train people well enough so they can leave, treat them well enough so they don't want to".





**FUTURE.**



# ARCHITECTURAL EXPERIENCE

---

MASTERPLANNING & HIGH RISE PROJECTS

MID RISE & LOW RISE PROJECTS

CULTURAL PROJECTS

INTERIOR DESIGN PROJECTS

# **SOK AN KESARKOL MASTERPLAN & WELCOME CENTRE**

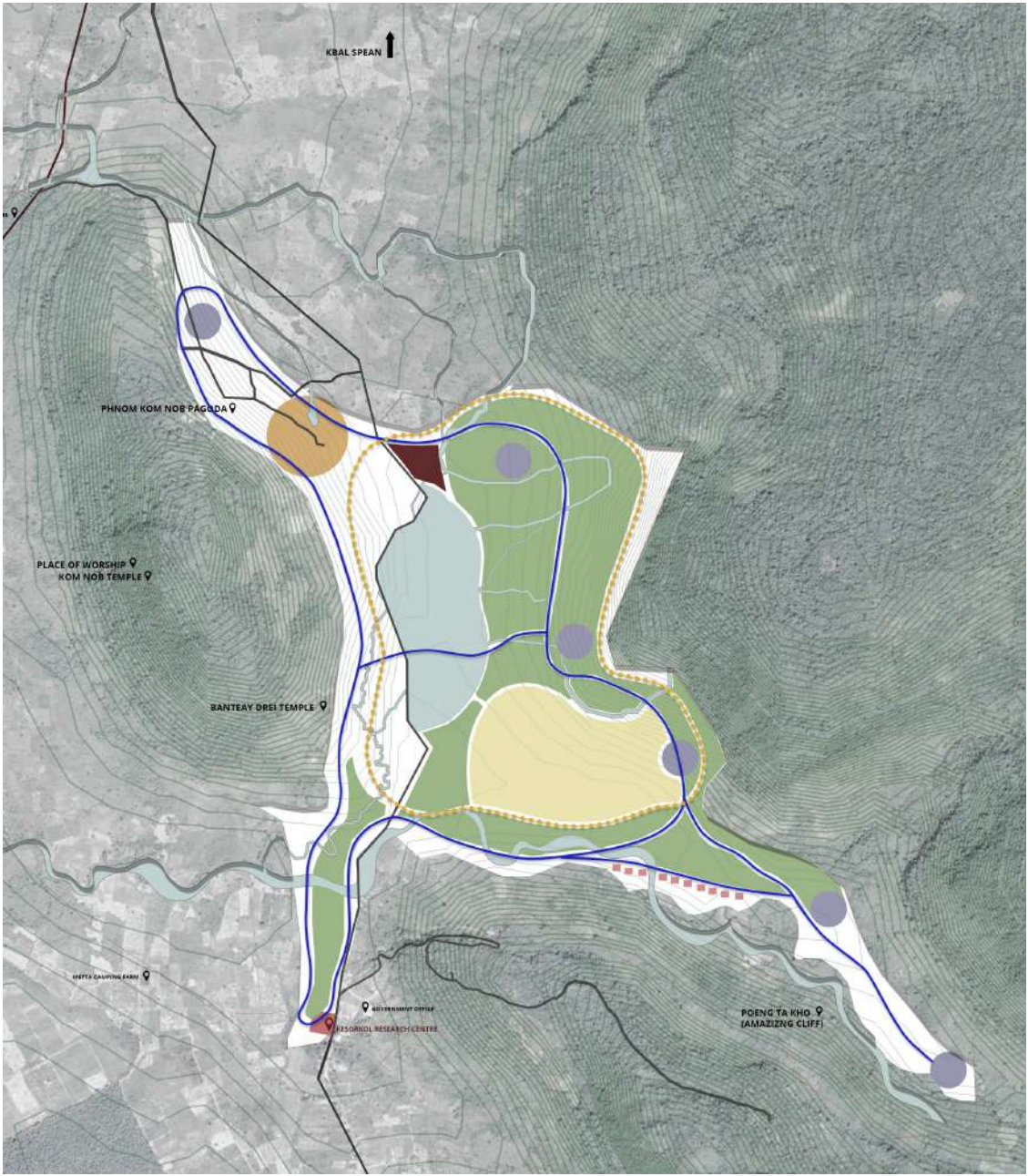
*SIEM REAP, CAMBODIA*

The Sok An Kesarkol Masterplan & Visitor Centre is a multi-phased project.

The Masterplan covers a total of 2022 hectares, encompassing the Welcome Centre, Eco-Resort, Hiking and 4WD trails, as well as camp sites and agricultural zones.

The Welcome Centre, located at the entrance to the site, is designed to respect the heritage and prestige of Khmer Vernacular Cultural architecture, whilst reflecting on the life of His Excellency Sok An.

Including information centre, cafe, museum, events and training spaces as well as management offices and amenities, the welcome centre is an holistic building for tourism and to showcase the best of Cambodia.







# KEO PHOS PARADISE MASTERPLAN

*SIHANOUKVILLE, CAMBODIA*

The project brief called for a large mixed-use masterplan, primarily consisting of aged-care and independent living residential accommodation.

Spread over approximately 350 hectares, the site is marked by exciting topography projecting views towards to the sea in the south-west of Cambodia.

The first of its kind in the Kingdom of Cambodia, Keo Phos Paradise will set the standard for retirement & independent living. 3,500 residences, retail, food & beverage, medical and fitness amenities make up the majority of the built form. Detailed and substantial landscape design, include parks and lakes featuring walking & cycling tracks, picnic areas and public amenities create a lifestyle for a centralised and independent community.



# KP HOLIDAY MASTERPLAN

*SIHANOUKVILLE, CAMBODIA*

KP Holiday is a mixed-use development in Keo Phos, Cambodia. Located in close proximity to the Expressway, the site is 1.5 hours from Phnom Penh and 1 hour from Sihanoukville, enjoying ease of access from both cities and international airports.

The project covers over 100 hectares of land. The western most boundary of the site meets the sea, with a white sand beach for several hundred meters. This prime beachfront with sunset views is ideal for beach activities. Behind the beach is located a 150 key hotel, with ground floor food & beverage venues. A retail plaza with parking and landscape provides a link to the beach, hotel and sports centre for swimming, tennis and a golf driving range.

A natural waterway marks a key feature on the site, at the entrance to which is located the yacht club with marina boat docking.

To the east of the existing waterway is located the residential zone of the development, with 4 different house types. The premium residential house type enjoys beach front access, whilst the residential zone is characterised by the artificial islands and waterways which follow the natural topography of the site.







# SHREWSBURY MASTERPLAN

*PHNOM PENH, CAMBODIA*

The Shrewsbury International School Phnom Penh is an international boarding school, and a campus of the prestigious 450-year-old Shrewsbury School from the UK.

The project brief called for a campus for 2000 students, with approximately 400 boarding students, in Phnom Penh Chroy Changvar.

Future is collaborating with the leading Australian architecture firm called Architectus to deliver the world class school and facilities which will include Well-being Centre, Performing Arts Centre, Library, Theatre, Dining, Arts and Technology, Sciences, and sports facilities.

Integrated Landscape design and amenities will make the site successful.

Integrating the school buildings with the landscape features and incorporating climate-sensitive design through the use of shading, trees and covered pedestrian paths etc will be key to the success of the project.

Future is also responsible for the Project Management to ensure the successful delivery of the project.



# APSARA MASTERPLAN

PHNOM PENH, CAMBODIA

Phnom Penh, the capital city of the Kingdom of Cambodia, has a dire wanting for public open space and greenery. Limited hardscaped plazas in the city provide residents with a select few areas for recreation and socialising, whilst no public parks or green spaces exist in the city.

The large 5,500m<sup>2</sup> site in the heart of Phnom Penh was the perfect opportunity for public open space - an area where residents can meet, interact, and relax, or attend events and build on community.

The development includes roadside and secure car and motorbike parking across the ground and mezzanine levels, with a perimeter of retail space facing out to the three bounding streets.

Key landscaping through ramps and terraced steps guides pedestrians from Street 57 to the east up to the central plaza of level 1. The plaza is surrounded by alfresco dining and food & beverage venues.

Levels 2 and 3 are deducted to a range of office spaces and co-working, with each floor accessing the sloping terraced green roof.

The roof itself flows smoothly from Ground to the top of Level 3, covering the site and providing public outdoor space. Intermittent seating areas, playground spaces, grassed lawns and shading through trees and structures will create an ambience through the day and night, allowing for social activities, recreation, relaxation, and events.



# JOVAN CITY MASTERPLAN

*PHNOM PENH, CAMBODIA*

The Jovan City project called for a range of villa design for the Morgan Park development in Phnom Penh, Cambodia.

Intended to be a unique, cutting edge and outstanding design, Future proposed an elegant and fluid form. Soft colour tones and finishes allow the architecture to express itself freely, with cantilevered awnings and curved corners creating both a bold yet harmonious architecture.



# HIGH RISE MULTI-RESIDENTIAL TOWER

*PHNOM PENH, CAMBODIA*

The high rise multi-residential tower is located in South East Asia. standing at 310m tall, it is scheduled to be one of the tallest residential buildings in the region.

The design of the tower is intended to reflect the internal functions, with the tower split into four zones, each distinguished by a common area which breaks the sleek tower form.

The lowest zone is multi-level carparking for residents. The ground floor contains residential lobby/arrival space and carpark access.

The three tower zones above the parking are for separated residential areas, each with its own distinct communal area for gym, pool, cinema and lounge area.

The rooftop of the tower is topped with a fine-dining restaurant and bar for residents and guests.

The building form is designed to optimise wind flow around the building, as well as to create a gentle impression on the city skyline. The tall tower will stand out amongst its context, and should be a contemporary form of design, materiality and engineering to maximise buildability and minimise embodied energy in a climate conscious world.



# KHOM HOTEL

*PHNOM PENH, CAMBODIA*

Future is engaged as the Project Manager, Construction Management and Facade Designer of the Khom Hotel at Wat Botum Park in Phnom Penh.

Responsible for overseeing the successful completion of the Autograph Marriot Hotel, Future is proudly leading the delivery and quality of the project. We have undertaken the redesign of the facade to ensure it closely reflects the branding, culture and significance of the project as well as maintains buildability and affordability.



# MIXED-USE HIGH RISE BUILDING

*PHNOM PENH, CAMBODIA*

The project brief called for a mixed-use high rise building in a prominent location in Phnom Penh, Cambodia. Split between retail and parking in podium, commercial and multi-residential towers above, the building is a complex combination of building functions.

The commercial and multi-residential high-rise components share the centralised core with lifts and fire stairs, separating circulation but combining the structural and functional elements of the core.

The podium is intended to reference the French Colonial heritage of the area, whilst the towers above represent the future and modernisation of Cambodia. The elegant commercial tower is a dynamic and powerful form, protruding forward, whilst the multi-residential tower behind is intended to be subtle and refined.

Amenity for both buildings is well considered with balconies and landscaping providing shading to the apartments, whilst the commercial tower uses horizontal louvres to block the main solar heat gains.



# SEN SOK TOWER

*PHNOM PENH, CAMBODIA*

The mixed-use tower in Phnom Penh, Cambodia comprises of 32 levels with podium retail, commercial levels through the main tower and 5 levels of penthouse residential apartments.

The large site allows for large, clear floor plates for commercial and retail spaces, however resulted in a wide and ungracious built form. The corners of the building were faceted to allow for a more gentle silhouette.



# THYRADA

*PHNOM PENH, CAMBODIA*

Thyrada is a Mixed-Use building in Phnom Penh. Located in a central location of the city, the 11-storey building hosts a mix of retail, commercial, media and residential functions.

The louvred facade is designed to provide natural shading to the building interior, with length and spacing determined by solar access and facade orientation.

The built form is articulated to provide an exciting mix of terraces, with landscaping and awnings to provide outdoor spaces at key levels.



# BOREY EMERALD PARK

*PHNOM PENH, CAMBODIA*

The first project working privately is a masterplan for a mixed use precinct in Phnom Penh, Cambodia for 250 affordable housing units, a commercial and retail central plaza and open air market.

The project brief called for affordable shop-top housing, using local materials and builders. The masterplan respects the constraints in architecture and planning due to a lack of local controls and skilled labour, however proposes both a new approach to urban design and architecture.

This is achieved through the careful integration of landscaping and greenery throughout the site, creating shading and colour. Additionally, a central boulevard is created with an open-air market and community centre to mark a destination at the centre of the site, intended to engage the precinct with the broader community, further activating the street edges and local micro-economy.

The architecture itself is very simple and inexpensive, using the local construction techniques to create an affordable housing typology. Each unit is designed to maximise natural ventilation and access to natural light, but minimise heat gains.

The project is ongoing, with documentation scheduled to be completed in November 2021.



# BOREY EMERALD PARK

*PHNOM PENH, CAMBODIA*

The first project working privately is a masterplan for a mixed use precinct in Phnom Penh, Cambodia for 250 affordable housing units, a commercial and retail central plaza and open air market.

The project brief called for affordable shop-top housing, using local materials and builders. The masterplan respects the constraints in architecture and planning due to a lack of local controls and skilled labour, however proposes both a new approach to urban design and architecture.

This is achieved through the careful integration of landscaping and greenery throughout the site, creating shading and colour. Additionally, a central boulevard is created with an open-air market and community centre to mark a destination at the centre of the site, intended to engage the precinct with the broader community, further activating the street edges and local micro-economy.

The architecture itself is very simple and inexpensive, using the local construction techniques to create an affordable housing typology. Each unit is designed to maximise natural ventilation and access to natural light, but minimise heat gains.

The project is ongoing, with documentation scheduled to be completed in November 2021.



# BOREY VENG SRENG

*PHNOM PENH, CAMBODIA*

Borey Veng Sreng in Cambodia's Phnom Penh is an affordable housing precinct of 150 Shophouses and Townhouses.

The project commenced in October 2019 and is currently under construction, with the completion likely to be in November 2020.

The brief was extremely complex due to the minimal construction budget of USD\$200/m<sup>2</sup>. We were able to improve the yield from an initial 95 units to a total of 150 units, whilst maintaining public space and streets.

This is an exciting project for me personally as the short time period and tight budget are incredible lessons as I manage the site to ensure the local builders are building the project according to the drawings, which is often difficult to manage in Phnom Penh. Unskilled labor and a site workforce of over 200 laborers add to the complexities.



# KAMBUJAYA RESIDENCES

PHNOM PENH, CAMBODIA

Kambujaya Residences is a boutique residential project in a rapidly developing area of Phnom Penh. Located to the south-east of the city, the site has a close proximity to National Road 1, giving it easy access in to the center of Phnom Penh, as well as the future Aeon 3 development and proposed International Airport.

From the outset of the project the importance of creating a high quality way of life was paramount. The vision encapsulated the best aspects of Cambodian vernacular design techniques of passive natural ventilation and solar access, combined with the quality and standards of Australian best practice design. Large private open space at the front, middle and rear of the house serve to provide residents with a mix of functional green spaces and a strong connection to nature. The large gated driveways provide substantial space for secure parking.

The light filled internal courtyards serve several purposes, all intended to provide a better quality of housing. The courtyards have been designed to not only provide a visual aesthetic within each house but also to provide a social gathering space, an area for contemplation and most importantly to give better amenity to the houses.

Large doors open the house to the courtyard to naturally ventilate the entire house, whilst the abundance of glazing will fill all the rooms facing the courtyard with natural light. The landscaping is intended to be easily maintained to provide the space with a natural feeling and improved air quality. Stairs and walkways wind through the covered courtyard to connect the upper levels, as external access inspired by vernacular Cambodian architecture.

The various rooms in each house have been designed diligently to provide not only better natural ventilation and air circulation, but also natural lighting and high quality living. On the ground floor, residents can look through the entire house from one end to the other. This open layout is intended to connect the residents and spaces in the functional rooms (living room, dining room and kitchen) with the landscaped courtyard and backyard, giving the sense of a strong connection between indoor and outdoor.

The development intends to set a new standard of boutique housing in Cambodia, rediscovering the importance of nature in design and of natural lighting and ventilation techniques.







# KAMBUJAYA VILLA

*PHNOM PENH, CAMBODIA*

The 15th house in the Kambujaya Residences development is a unique semi-detached villa.

The 4 bedroom villa also hosts a gym, study, lounge space, pool and garden, as well as roof terrace and jacuzzi.

The facade of the villa is directed to the north, with terraces and balconies maximising the sun potential.

Designed to be unique yet still compliment the larger Kambujaya Residences development, this villa sets itself apart as a bookmark of the project.



# RIVERVIEW VILLA

*PHNOM PENH, CAMBODIA*

The project brief called for a family home on the Tonle Sap River, with views projected north over the water.

A 4 bedroom house, the design proposal looked at maximising the opportunities of the site. Large windows opening to the river with terraces optimise the views, whilst a roof canopy wraps the form, providing protection from the harsh Cambodian sun and screening the roof terrace.

Large open plan interiors flow through from one side of the house to the next, creating a feeling of natural connections with the views, nature and natural lighting.

Landscaping around the house has been designed to create a feeling of discretion and intimacy. Views from the neighbours and the public road are blocked by strategic landscaping.

A gym and BBQ area near the river are discretely hidden from the main house, with garden paths creating a journey to the outbuildings.



# KANDAL VILLA

*PHNOM PENH, CAMBODIA*

A contemporary residential design, the 5 bedroom family villa called for a clean, simple architecture, focused on views to the surrounding landscaped gardens.

Complimented by a 4 hectare site, the villa sits amidst a jungle of carefully designed planting and paths. Outbuildings include gym, sauna, spa, BBQ pit and dining, aswell as staff accomodation and 6-car carpark.

The architectural form is designed to project the residents into the garden, whilst standing isolated from its surrounds. A juxtaposition between nature and built form.



## HOUSE #3

*PHNOM PENH, CAMBODIA*

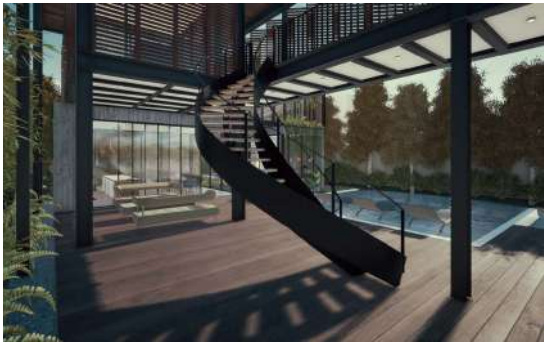
House # 3 called for a luxury private villa in the outskirts of Phnom Penh.

The design is for a newly married couple looking to start their family, so must accommodate for children and growth. The clients wanted a house which had a strong connection with the landscape, a carefully designed japanese inspired garden, and passive climate control to manage the standard 34oC days with high humidity and torrential rainfall during the wet season.

The design response was for a collection of spaces connected with covered walkways. Each room is separated entirely so the occupants must walk outside, into the landscaped spaces, to enter in to another room.

All rooms have operable windows for natural ventilation and shade screens to limit direct sunlight and provide for additional privacy.

The design also considered a tight budget of USD\$150,000, and allowed for an unskilled work force. The basic material palette of off-form concrete, timber and steel accompanied by simple details and joinery should allow the project to be easily realised in 2020.



# BAKERS COTTAGE

*GHERINGHAP, VICTORIA*

Bakers Cottage is a residential project in Rural Victoria, Australia. The brief called for an extension to an existing historical stone building, with the addition of 3 bedrooms and a bathroom for a growing family.

The first step in the project was to create a clear distinction between the old and the new, whilst respecting and associating the forms together.

This was achieved by mimicking the form of the existing building. The width, height and pitch of the roof forms the outline of the new extension. The forms of the two structures are separated by a bridge/corridor and courtyard. The bridge is finished in corrugated steel, to stand as a buffer element, whilst the new building uses burnt timber as the facade to again distinguish it as a new structure.

The timber facade is raised off the ground to protect from bushfires. Additionally the material selection is coherent with the rural setting, with the use of timber and corrugated steel.



# VALLEY HOUSE

*GHERINGHAP, VICTORIA*

Valley House is a new family residence  
in Gheringhap, Victoria.

Design to take full advantage of the views across the  
Moorabool Valley with a large protected terrace and pool  
space, whilst the wings protect the terrace from strong  
southern and northern winds.

The clients opted for a very traditional styled Victorian  
bluestone clad homestead. The 3 bedroom house will  
serve as a retirement home with rooms for guests and  
family to visit.



# BOREY PENG HUOTH FACADE RENOVATION

*PHNOM PENH, CAMBODIA*

This project called for a complete facade renovation of a family residence in Borey Peng Huoth, Phnom Penh.

The villa renovation included new floor finishing, wall finishing, ceiling finishing, as well as landscaping for the facade.

The new ceiling has given the house a modern look and the flooring a sleek, contemporary finish. The once old and outdated landscaping has been transformed into a luscious oasis. The new design gives the house a warm and inviting feel, while maintaining its sophistication.

The project was completed in 2022.



*BEFORE RENOVATION*



AFTER RENOVATION

# THE BANG ART GALLERY

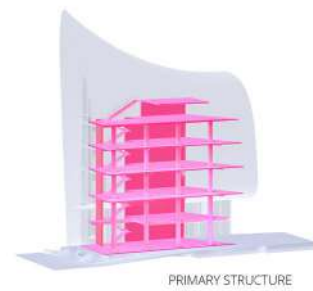
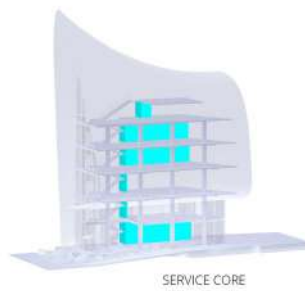
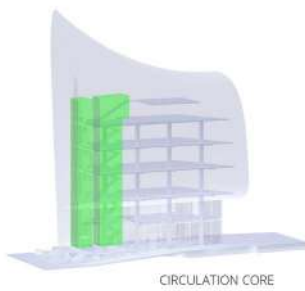
*PHNOM PENH, CAMBODIA*

For our proposal to The-Bang, a mixed-use cultural building competition in Battambang, Cambodia, we partnered with the renowned local artist Fonki to deliver a design inspired by the historical religious Buddhist and Hindu architecture of the Khmer Empire.

Combining art gallery, co-working space, cafe, artists residence and workshop space, our proposal aims to be an iconic form in the skyline of Battambang, highlighting the emerging arts culture in Cambodia with an architectural building which would be recognised around the world.

The building is designed to be fully accessible, with lift and stairs, ramps and services integrated into dedicated cores, and complying Australian access codes.

A concrete structure with a steel space-frame highlights the designs emphasis on buildability. The external skin is designed to be insulated panels engraved in Kback art by Fonki, so the building itself is an art form.



# KOH RONG YACHT CLUB

*KOH RONG, CAMBODIA*

The masterplanned precinct for a yacht club calls for a world class destination at Cambodia's stunning Koh Rong island.

The precinct includes a club house with accompanying bar, cafe, lounge, showers, sun deck and pool opening on to the beach and ocean. A convenience store allows visitors to isolate and switch off, whilst luxury beach and forest villas provide accommodation for both long and short term stays.

Careful consideration was given to the landscape, with built form designed to minimise the intrusion on the natural landform. Raised structures minimise the impact on the ground surface, whilst natural and locally sourced materials including bamboo, thatched roofing and local brick minimise the impact on the environment and local context.

Interior spaces have been designed to maximise the warm tropical local climate, with ceiling fans and mosquito netting replacing glass and air-conditioning, with the intention of using passive climate design such as natural ventilation to cool the spaces.

The project is currently in design and planning phase, with construction intended to commence in 2021.



# RUSSIAN BLVD COMMUNITY PARK

*PHNOM PENH, CAMBODIA*

The project brief called for the activation of a large 3 hectare site along Russian Boulevard in Phnom Penh. Uses for the space include a park, playground spaces, market area, retail/food & beverage, and potential co-working or commercial/office space. In addition to built elements, landscape features include opportunities for recreation such as open plazas for group activities, a running track and potential urban farming.

The masterplan creates a vibrant space for community, with a range of uses to activate the site. The design also responds to the local climate, with hot temperatures and seasonal rainfall risking the site being under-utilised. A canopy of structures and trees will protect spaces such as outdoor seating, walkways and retail spaces from the weather.

The design is defined by hubs for different uses, such as market, retail, commercial and public. A shared car/pedestrian one-way road flows through the site, connecting the hubs and allowing circulation.

The commercial office space/co-working hub is pushed to the north of the site to draw long-term users deep in to the site, activated all of the spaces along the way. A central amphitheatre and retail space allows for staff and the public to enjoy outdoor covered space for meals, events and performances.

Walkways and outdoor terraces are covered by a mix of man-made and natural canopy, with trees and low height plants defining the landscaping and creating a vibrant and energetic community garden and active site.



# PLAY SPACE MONTESSORI

*PHNOM PENH, CAMBODIA*

The brief called to create an environment that is focused on the needs and interests of each child, fostering a lifelong love of learning and self-motivation.

Located south of Phnom Penh, inside Factory mixed-use creative hub which allows for ease of access to other facilities in the complex.

The big and open space encourages exploration and discovery as it allows children to move freely and engage in hands-on learning.

An open space can also promote a sense of calmness and relaxation in children, which is important for their emotional well-being and ability to focus on learning.  
Scroll down to see more of this project.



# ROLL BABY CAFE

LONDON, UK

Roll Baby is a new concept store under the Farm Girl franchise in London, UK. The brief called for a small grab-and-go style cafe space at Londons iconic South Kensington Station.

Serving high quality foods and coffee, with a focus on Vietnamese spring rolls, the fresh and vibrant colours of the products helped define the style of the interior design for the cafe space.

We selected to work with a neutral palette of light grey wall rendering, polished concrete flooring, white tiles and timber features for the shelving and counter.

Internal plants and the soft, warm timber colours compliment the natural and vibrant foods, creating a space that reflects the high quality, healthy food products served in the space.







# YA KUN KAYA TOAST

*PHNOM PENH, CAMBODIA*

The project brief called for a cafe aimed towards people of all ages, with food and beverages originating from Singapore.

Ya kun is a Singaporean chain of mass-market, retro-ambience cafés selling toast products (notably kaya toast), soft-boiled eggs and coffee. Founded by Loi Ah Koon in 1944, Ya Kun remained a small family-run stall for decades, but has expanded rapidly since

Loi's youngest son headed the business in 1999. The chain has over fifty outlets, mostly franchised, across 14 countries, and is a Singaporean cultural icon, known for its traditional brand identity and conservative, people-centric corporate culture.

Ya Kun Kaya Toast. From its humble beginnings as a modest coffee stall in the 1940s, the name of Ya Kun has become synonymous with unparalleled kaya toast and irresistibly fragrant coffee and tea, enjoyed amidst a cosy atmosphere.



# RIVERVIEW VILLA INTERIOR

*PHNOM PENH, CAMBODIA*

The project brief called for a family home on the Tonle Sap River, with views projected north over the water.

A 4 bedroom house, the design proposal looked at maximising the opportunities of the site. Large windows opening to the river with terraces optimise the views, whilst a roof canopy wraps the form, providing protection from the harsh Cambodian sun and screening the roof terrace.

Large open plan interiors flow through from one side of the house to the next, creating a feeling of natural connections with the views, nature and natural lighting.

Landscaping around the house has been designed to create a feeling of discretion and intimacy. Views from the neighbours and the public road are blocked by strategic landscaping.

A gym and BBQ area near the river are discretely hidden from the main house, with garden paths creating a journey to the outbuildings.







# KOH PICH VILLA INTERIOR

*PHNOM PENH, CAMBODIA*

Koh Pich Villa is an 8 level family residence on Koh Pich Island in Phnom Penh.

Each floor serves a different function for the family, with guest lounge and office on ground and mezzanine, a library and gallery on level 1, guest bedrooms and gym on level 2, individual family suites on levels 3 to 6 and kitchen, dining and lounge on levels 7 and 8.

Designed using contemporary styles, all levels have been customised for the style preferences of the occupant and the function.







# CONDOMINIUM INTERIOR DESIGN

*PHNOM PENH, CAMBODIA*

The project brief called for a mixed-use high rise building in a prominent location in Phnom Penh, Cambodia.

Split between retail and parking in podium, commercial and multi-residential towers above, the building is a complex combination of building functions.

The commercial and multi-residential high-rise components share the centralised core with lifts and fire stairs, separating circulation but combining the structural and functional elements of the core.

Amenity for both buildings is well considered with balconies and landscaping providing shading to the apartments, whilst the commercial tower uses horizontal louvres to block the main solar heat gains.







# **FUTURE.**

[www.future.archi](http://www.future.archi)